

# PHILLIPS RIDGE

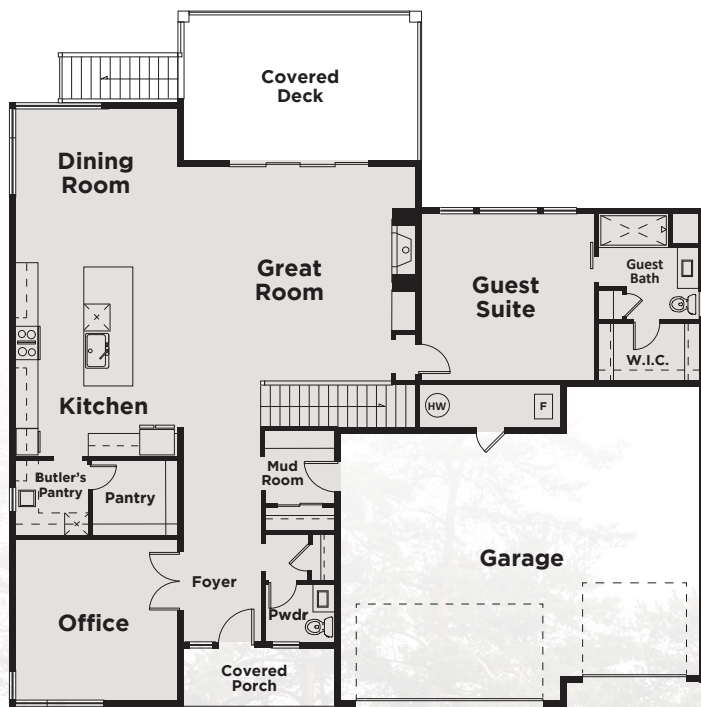


## THE OLYMPIC

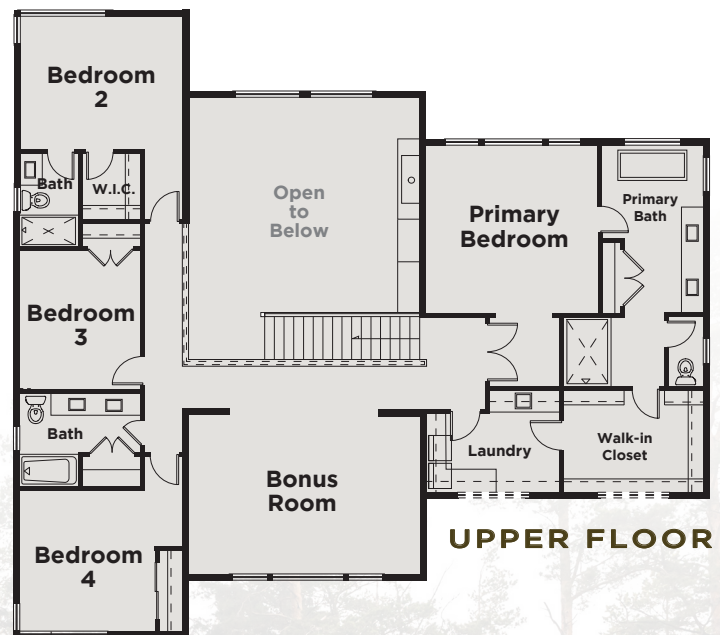
**3,910 sq. ft. / 5 Beds, 4.5 Baths / Bonus Room  
Great Room / Home Office-Den / Main Floor  
Guest Suite with Bath / Covered Deck-Outdoor  
Living Area / 3-Car Garage**

**MAIN FLOOR:** Covered Front Entry, Vaulted Foyer, Home Office/Den, Great Room with Fireplace, Covered Outdoor Living Area, Dining Room, Chefs Kitchen, Butler's Pantry, Guest Suite with 3/4 Bath, Mud Room, Powder Bath, and 3-Car Garage.

**UPPER FLOOR:** Primary En Suite includes 5-piece Luxury Bath and Large Walk-in Closet that Adjoins Laundry Room. Three Additional Bedrooms; Two Share Bath in Hallway, Third Has Private 3/4 Bath and Walk-in Closet. Bonus Room.



**MAIN FLOOR**



**UPPER FLOOR**

[www.PhillipsRidge.com](http://www.PhillipsRidge.com)

Disclaimer: Renderings, photos, floor plans, prices, and all content, including all verbiage, are not contractual documents, and are subject to change at any time. Call Bruce Lystad for details.